

**Do Now**

# Tattoos, piercings and body modification

Darren has amazing qualifications – a first-class degree from a top university, three As at A-level and a plethora of grades 8 and 9s at GCSE. He is at an absolute loss as to why he hasn't been able to find any jobs in his chosen sector, Human Resources. He's sometimes invited to interview yet is never offered a position.

**Discuss: Why do you think Darren is invited to interview, yet doesn't gain a position?**



Does this mean Darren wouldn't get a job anywhere?

# Tattoos, piercings and body modification



## Learning outcomes:

Describe the possible long-term and short-term consequences of body piercings and tattoos.

Explain how small decisions made in youth can have far reaching consequences in many areas of our adult lives.

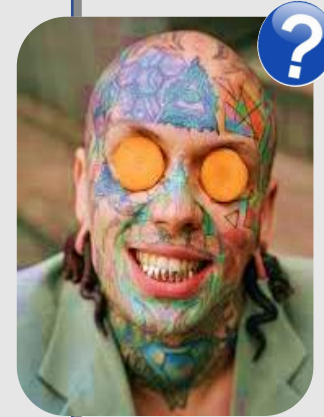
**Self Expression** – A way of showing the world your true self, or showing how you would like people to think of you.

**Septicaemia / Sepsis** – Blood infection conditions, which can be fatal. This can happen very quickly too if not treated immediately.

**Watch first:** <https://youtu.be/3v62VLD2vJM>

Although you may not agree with it, most employers do still hire partly based on appearance. It's important to note too that Darren has applied for a job in Human Resources. This is a part of a business that deals with managing the workforce, and also the hiring and firing. Although not customer-facing, Darren would likely be in charge of hiring the customer-facing staff.

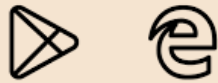
We already know Darren's own dress standards, so the question is, would he be able to adequately hire staff for customer-facing roles which would involve representing the company to the public? After all, we know he thinks his appearance is presentable. **Most employers would be very cautious about this and not hire Darren.**



## **Did you know?**

As of 2024, 20% of the UK population has tattoos. 11% have tattoos which are not usually hidden by clothes (e.g neck, face, hands).

Now we know that employers do still often judge candidates by their appearance, why is it that they actually do this?



*One reason an employer would be concerned about the employees' appearance is...*



Employers judge appearance to assess professionalism and make good first impressions. They want employees to reflect the company's image and brand. Appearance helps them decide if someone fits the workplace culture and dress code. Sometimes, biases can unfairly link looks to traits like competence or reliability.

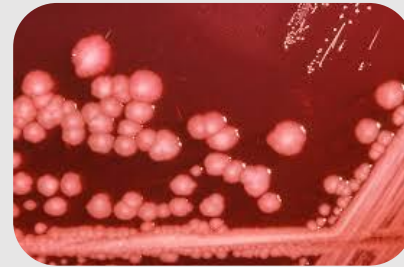


**The biological risks:** How exactly can tattoos and piercings put our health at risk in some circumstances?

**Watch the clips and complete the table you've been given.**

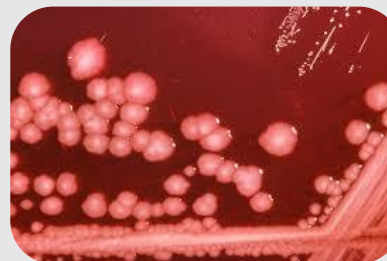
<https://www.youtube.com/watch?v=ysD4ywaOHuo>

<https://www.youtube.com/watch?v=80IHSuc3vfY>



What are the risks?	How can these affect our health?

**Let's go through our answers together now – don't forget to complete any points you may have missed.**



What are the risks?	How can these affect our health?
Blood poisoning	Swelling, discomfort, cellulitis.
Going to an unregulated tattoo artist	You may need on-going medicine, in extreme cases when not caught in time, it can result in death.
Your piercing may get infected	Having to apply steroid creams.
You may need to go to the doctor if your piercing is infected.	A piercing which is infected can become hot, sore and red.
If your tattoo is or piercing is very infected, you may even need to go to A and E.	An infected piercing can give you a temperature and produce puss.

# Tattoos, piercings and body modification



## Useful helplines and charities:

[Young Minds](#). Child and adolescent mental health charity for teens struggling with any subject. Call: 0808 802 5544

[Teen Line | Teens Support hotline - Connect, talk, get help!](#) Teen Line's highly trained teen listeners provide support, resources and hope to any teen who is struggling.

<http://www.tpiu.org.uk/> The tattoo and piercings industry union – a great place to find out more information on how genuine professionals work to keep the industry safe.

<https://www.cipd.org/uk/knowledge/employment-law/> More information on employment law, in case you're interested in what employers can and cannot demand in the workplace environment.



## Reporting a Concern at Thornden School

- It is important to us that all of you feel safe, happy and belong at Thornden.
- We also know that sometimes it is not as easy as simply telling a member of staff
- It could be:
  - A friend you are worried about
  - Someone being unkind to you
  - Something you have heard and think we should know



### How can you report anything you are worried about?

- Speak to a member of staff or parent / carer
- Visit the Well Being Den or Head of Year area
- On Satchel each week you will be sent a link to a form to share any worries you have
- On our school website homepage there is a 'Report a Concern' link.
- In the Student Bulletin there is a 'Report a Concern' link
- On all school desktops there is a 'Report a Concern' logo to click and report anything

# Need Support? You're Not Alone



If anything in today's lesson has affected you, or you want to talk to someone, there is help available.

## **Mental Health & Low Mood**

YoungMinds – <https://www.youngminds.org.uk>

Kooth – <https://www.kooth.com>

Mind – <https://www.mind.org.uk>

## **Apps That Can Help**

Calm – For mindfulness and sleep.

Headspace – Meditation and stress relief.

Clear Fear – Manage anxiety (designed for young people).

MeeTwo – Anonymously talk to other teens, moderated by experts.

## **Talk to Someone**

Your Tutor or Head of Year – We're here to help.

Wellbeing Team and School Nurse

Report a Concern on Satchel

Safeguarding Team with the Purple lanyards

## **Eating Concerns**

Beat Eating Disorders –

<https://www.beateatingdisorders.org.uk>

NHS Live Well – Eating Disorders –

<https://www.nhs.uk/mental-health/conditions/eating-disorders/>

## **Healthy Lifestyle**

NHS Every Mind Matters – <https://www.nhs.uk/every-mind-matters>

Change4Life – <https://www.nhs.uk/change4life>